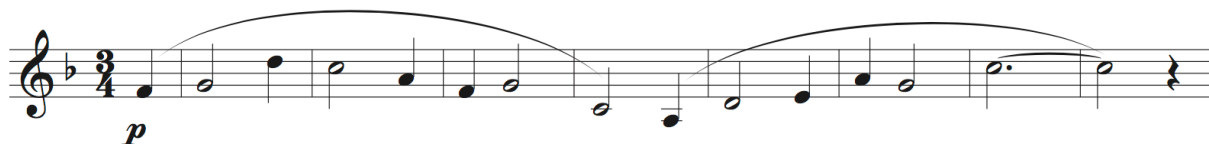


Junior Wind Ensemble Audition Excerpts

From First Suite in Eb for Military Band, by Gustav Holst



From La Rejouissance, by G. F. Handel (play mm. 41-53)

Three staves of music in treble clef, key signature of one flat (Bb), and 3/4 time signature. The music is divided into three systems, with measure numbers 37, 38, 39, 40, 41, 42, 43, 44, 45, 46, 47, 48, 49, 50, 51, 52, 53, and 54 indicated above the notes. The first system starts with a dynamic marking of *mf* (mezzo-forte) and ends with a dynamic marking of *f* (forte). The second system continues the melodic line with various rhythmic patterns. The third system concludes the excerpt with a dynamic marking of *f* and a final cadence. The numbers 41 and 53 are enclosed in boxes to indicate the specific measures to be played.

Further audition requirements:

- Play a concert B flat major scale
- Play one selection of your choice that demonstrates your playing ability
- Sight reading, provided at the audition