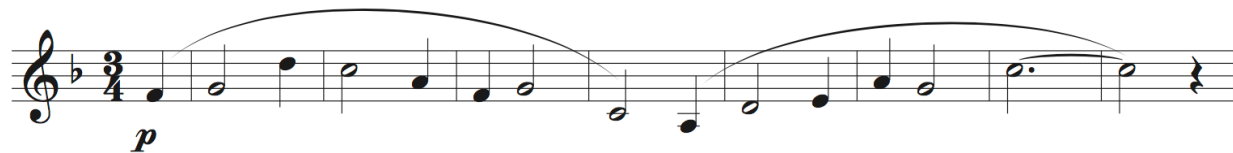


Junior Wind Ensemble Audition Excerpts

From First Suite in Eb for Military Band, by Gustav Holst



From La Rejouissance, by G. F. Handel (play mm. 17-33)

Three staves of music in 3/4 time, key of B-flat major. The piece begins with a forte (*f*) dynamic. The notation includes measure numbers 15 through 35. Measures 17, 25, and 33 are enclosed in boxes. The melody is a lively eighth-note pattern with some rests and slurs.

Further audition requirements:

- Play a concert B flat major scale
- Play one selection of your choice that demonstrates your playing ability
- Sight reading, provided at the audition